

## OUR COMPANY | trust.innovation.excellence.

Swiftships is recognized internationally as a leading shipbuilder and maritime systems integrator. Our main activities encompass design, engineering, shipbuilding, co-production programs and vessel's lifecycle support services.

Since 1942, we provide clients with integrated solutions that combine quality, the most advanced technologies, and dedicated customer services focused on excellence. Swiftships' teams of experienced engineers, experts and program managers, constantly improve the capabilities of our customers and partners, so they can accomplish their missions safely and efficiently.

### Our Vision

Be a global leader in designing, constructing and maintaining advanced military platforms.

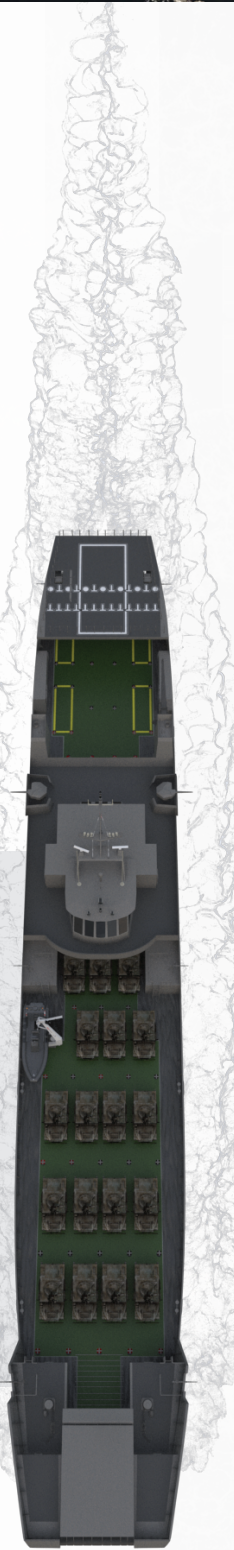
### Our Mission

Provide clients with a vital advantage for their military, security or commercial operations.

## R&D | continuous innovation supporting sustainability

Swiftships' R&D programs are at the core of our strategy. Anticipating the future trends, our efforts are focused on development of more reliable, more efficient vessels with multi-mission capabilities. Swiftships recent solutions for increased fuel efficiency, reduced vibration and extended vessel's operational functions are few achievements that contribute to client's higher return on investment. A primary focus of our R&D activities:

- Reliable, safe and effective Autonomy Integration
- Reduction of negative environmental impact by improving vessels propulsion and modernizing shipyards' operations
- Co-development programs for advanced navigation and control systems
- New aluminum welding technology



## FEATURED PROGRAMS

### LCU 1700

In 2018, NAVSEA contracted Swiftships to design and build Landing Craft, Utility-1700 surface connectors.



### Autonomy Integration

The first shipyard contracted to build autonomous vessels for the U.S. Navy.

### MRO Expansion

New investments and contracts for vessels maintenance, repair and overhaul services.



## SWIFTSHIPS VESSELS:

Corvettes  
Fast Patrol Vessels  
Patrol Boats  
Landing Craft  
Unmanned Vessels  
UAV Retrievers  
Minehunters/Minesweepers  
Special Operations/Riverine  
Fast Supply Vessels  
Multi Purpose Vessels  
Offshore Supply Vessels  
Maintenance Support Vessels  
Tug/Push Boats  
Hydrographic Vessels  
Pilot Boats  
Route Survey Vessels

Length: 10 - 80 meters  
Material: Aluminum, Steel,  
Fiberglass or composite.



## GLOBAL SUPPORT

With over 75 years of history serving military and commercial clients around the world, Swiftships provides technical and operational support just-in-time and in the place you need.

Our clients benefit from extensive warranty support services and personalized program management assistance.

The strategic establishment of local offices in the North and South Americas, Middle East and North Asia, and strong global partnerships, allows Swiftships to assure client's missions never stop and keep vessels operational.

### Swift Headquarters

1660 International Drive 2nd Floor, McLean, VA 22102  
Phone: 985-384-1700  
Fax: 703-356-1166

### Swift Corporate Office

8001 Hwy 182 East, Morgan City, LA 70380  
Phone: 985-384-1700  
Fax: 985-380-2565

### Swift Egyptian Co-Production Site

22 Ali Basha Zulfikar Roushdy, Alexandria, Egypt  
Phone: 985-384-1700

### Swift KSA

Prince Sultan Bin Abdulaziz Rd, Alhumdulillah Mathar Ash Shamali - Suite #23, Riyadh 11321, Saudi Arabia  
Phone: +966 11 211 2344

[WWW.SWIFTSHIPS.COM](http://WWW.SWIFTSHIPS.COM)

LOREM IPSUM DOLOR SIT AMET, CONSECTETUER ADIPISCING ELIT, SED DIAM NONUMMY NIBH EUISMOD TINCIDUNT UT LAORET DOLORE MAGNA ALIQUAM ERAT VOLUTPAT, UT WISI ENIM AD MINIM VENIAM, QUIS NOSTRUD EXERCI TATION ULLAMCORPER SUSCIPIT LOBORTIS NISL UT ALIQUIP EX EA COMMODO CONSEQUAT, QUIS AUTEM VEL EUM IRIURE DOLOR IN LOREM IPSUM DOLOR SIT AMET, CONSECTETUER ADIPISCING ELIT, SED DIAM NONUMMY NIBH EUISMOD TINCIDUNT UT LAORET DOLORE MAGNA ALIQUAM ERAT VOLUTPAT, UT WISI ENIM AD MINIM VENIAM, QUIS NOSTRUD EXERCI TATION ULLAMCORPER SUSCIPIT LOBORTIS NISL UT ALIQUIP EX EA COMMODO CONSEQUAT, QUIS AUTEM VEL EUM IRIURE DOLOR IN

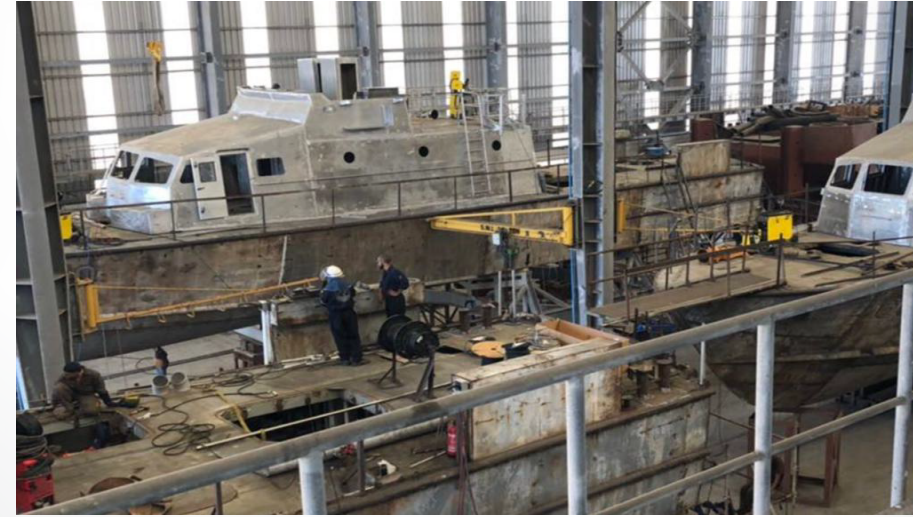
 **SWIFTSHIPS**  
Trust.Excellence.Innovation.



## TECHNICAL COOPERATION

We offer highly flexible and custom-tailored cooperation models for establishing local-built capability. From design licensing, to full scope assistance in developing production capability, KITs supply and day-to-day management. Swiftships assures efficient transfer of technology, production and knowledge.

Swiftships has extensive experience working with international clients. Our localization programs support governments increasing their industrial base, creating local employment and bringing technology and know-how to their countries for the long-term benefit.



Coproduction activities in Egypt | Over 15 vessels co-produced during the first 5 year

## FEATURED VESSELS | redefining the new possible



**Swift 75M Corvette** | A multi-mission vessel that provides an outstanding balance of oceangoing capabilities, firepower and rotary-wing support

LOA: .....	76.3M	250' 5"
BREADTH: .....	12.4M	40' 5"
WATERLINE LENGTH: .....	69.8M	229' 0"
DEPTH: .....	5.6M	18' 6"
DRAFT: .....	3.0M	9' 10"
DISPLACEMENT: .....	1,250 LT	
SPEED: .....	29 KNOTS	[@ 85% POWER]
RANGE: .....	> 5,000 N.M.	[@ 15 KNOTS]



**45M Fast Patrol Boat** | built using state-of-the-art technology, high quality components with a 25-year life cycle.

LOA: .....	45 M	147' 6"
BEAM: .....	8.23M	27'
DRAFT: .....	1.98M	6' 6"
RANGE(12Knots): .....	2778KM	
FUEL CAPACITY: .....	38000L	
POTABLE WATER: .....	3785L	
SPEED: .....	40 KNOTS	(MAX FULL LOAD)
CREW: .....	30 CREW	(7 OFFICERS)



**35M Fast Patrol Vessel** | a primary option for navies worldwide seeking for efficient, robust and multi-capable offshore boat.

LOA: .....	35.0M	115' 0"
BREADTH: .....	7.25M	23' 9.5"
DRAFT: .....	1.5M	4.5'
RANGE(12KNOTS): .....	5,556 KM	
FUEL CAPACITY: .....	28,400 L	
POTABLE WATER: .....	1,890 L	
SPEED: .....	40+ KNOTS	(NORMAL LOAD)
CREW: .....	12+S.O.F.	



**28M Patrol Boat** | An exceptionally well proven hull (steel, aluminum, or composite) designed for multiple roles

LOA: .....	28.3M	93' 0"
BREADTH: .....	5.7M	18' 7"
DRAFT: .....	2.06M	6.75'
RANGE(12KNOTS): .....	1667 KM	
FUEL CAPACITY: .....	14383 L	
POTABLE WATER: .....	1,892 L	
SPEED: .....	25 KNOTS	(NORMAL LOAD)
CREW: .....	24	(INCLUDING 4 OFFICERS)

## NEW BUILD | from design and construction to deployment

### DESIGN AND ENGINEERING

Swiftships offers access to over a hundred proprietary military and commercial vessels' designs and test data with option to modification and adjustments. Our engineering teams combine continuous product development along with years of shipbuilding experience to produce innovative, highly accurate and functional technical designs.

Swiftships engineers are expert in applying computer-aided design, engineering, and analysis methods across all technical disciplines involved in vessels architecture. We use modern digital tools for configuration auditing and management, optimization of availability and modernization planning incl. 3D. Our solutions help ship owners to lower Total Ownership Cost (TOC) with the most accurate packages and reliable solutions for production implementation.

### SHIPBUILDING

Swiftships vessels are highly recognized in the industry for their quality, efficiency and innovation. Since 1942, we have built over 1000 hulls for our customers worldwide. We offer vessels of up to ninety meters, made of aluminum, steel, fiberglass, or composite.

Our services include:

- Ship fabrication, hulls, structures and components
- Weapon systems integration
- Autonomous solutions
- Ship testing and certification
- Communication, navigation and sensors integration
- Training (conus/aconus)
- Integrated Logistics Support

### TRAINING & PROGRAM SUPPORT

Swiftships qualified trainers provide comprehensive training so clients can take full advantage of our vessels' capabilities and reduce operational costs.

We combine theoretical learning with use of simulations and hands-on practice covering different areas such as ship operation and safety, systems' management, vessel's maintenance and more.

### A SOLUTION TO EVERY CHALLENGE

Whichever challenge you might face, Swiftships will work with you to develop the right solution.

Our proprietary designs can be adapted and standard technology packages upgraded to better meet your specific environmental and mission requirements. Our dedicated team will go above and beyond to make your missions successful.

- Comprehensive program planning and management
- Maritime infrastructure planning, designing and establishment
- Over 100 designs for licensing with data packages and proven hulls
- Experience in transfer of technology and knowledge

### WHY SIFTSHIPS?

- Turnkey production readiness solutions
- Supply chain planning, implementation and management systems
- Specialized training programs
- R&D capability development



Service Life Extension Program | Comprehensive SLEP to the U.S. Navy Landing Craft

## MAINTENANCE REPAIR & MODERNIZATION

Swiftships has decades of experience providing all aspects of Maintenance, Repair and Overhaul (MRD) and Refit/Ship Modernization.

We offer a full range of reliable, fast and cost-effective maintenance packages. These include planned or predictive, preventative, corrective and continuous maintenance. Our expertise encompasses all aspects from the ship's exterior upgrades to the most complex machinery and electrical (HME), electronics, communication and navigation (COM/NAV), weapons systems and other systems overhauls, servicing, upgrades and repairs



**The LCU 1700 Landing Craft** | Extremely efficient utility that features advanced technology and low maintenance cost

LOA: .....	42.3M	139'
BEAM: .....	9.4M	31'
DRAFT: .....	1.6M	5' 3"
RANGE: .....	1,931.2 KM	
FUEL CAPACITY: .....	13,248.9 L	
POTABLE WATER: .....	3,785.4 LITERS	
PAYLOAD: .....	170 SHORT TON	OF CARGO, 2 MIAI TANKS OR 350 COMBAT TROOPS
SPEED: .....	11 KNOTS	
CREW: .....	2 CAPTAIN, 12 ENLISTED	



**Special Operation Series** | Fully customizable vessels that can be configured to be unmanned, semi-manned or remotely controlled

LOA: .....	10.7M	35'
BEAM: .....	2.43M	8'
DRAFT: .....	5.3M	21'
FUEL CAPACITY: .....	681.3L	180 GAL
ENDURANCE(35Knots): .....	200+N.M.	
DISPLACEMENT (FL): .....	25,320LBS	
MAXIMUM SPEED (FL): .....	+50KNOTS	
CREW: .....	19(4CREW+15 TROOPS)	



**Fast Supply Series** | a new generation solution blending high-speed performance, delivery capabilities, and unsurpassable efficiency

LOA: .....	67M	220'
BEAM: .....	14M	46'
DRAFT: .....	3.9M	13'
SHIP'S FUEL: .....	454,249 L	
CARGO FUEL: .....	476,961 L	
POTABLE WATER: .....	105,991 L	
CARGO WATER: .....	105,991 L	
DRY BULK: .....	8,000 CF	
NET TONNAGE: .....	380 TONS	
CLEAR DECK: .....	43.8M X 11.5M	
SPEED: .....	14 KNOTS(N-LOAD)	
ACCOMMODATIONS: .....	22	



**Offshore Vessels** | From platform support to maintenance, custom-designed for efficient deep water, long distances and crew comfort.

LOA: .....	47M	155'
BEAM: .....	8.5M	28'
DRAFT: .....	1.8M	6'
FRESH WATER: .....	93,688 L	
POTABLE WATER: .....	3,785.4 L	
SHIP'S FUEL: .....	29,147 L	
TRANSFERABLE FUEL: .....	72,869 L	
GROSS TONNAGE: .....	98 GROSS TONS	
CARGO DECK SPACE: .....	2024 SQ.FT.	
CARGO DECK CAPACITY: .....	150 TONS	
SPEED/MAX SPEED: .....	25 / 32 KNOTS	
PASSENGERS: .....	60	