

# 35 METER

# FAST PATROL VESSEL (FPV)

## MILITARY VESSEL



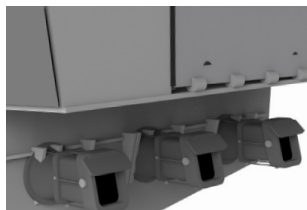
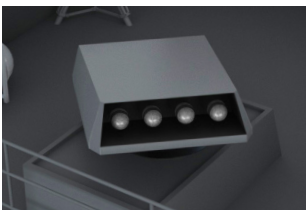
The 35 Meter Fast Patrol Vessel (FPV) is a modern, robust, and efficient FPV with a capability to operate in all major areas around the world with condition(s) up to sea state 6 survival at the best heading and fully operational capability at sea state 4.

The FPV high quality design focuses on reliability of operation and ease of maintenance while using topnotch components with a 10-year cycle. The hull and superstructure are constructed of all-welded aluminum alloy in accordance with ABS HSNCR regulations. The hull includes 7 watertight bulkheads forming 8 watertight compartments. Boats can be refueled at sea using side-by-side procedures and run on #2 diesel fuel.

The FPV with its fast speed, high maneuverability and its sophisticated command and weapon systems is ideally suited to respond to dispersed and persistent security threats such as terrorism, piracy, smuggling, illegal immigration and other threats of this nature.

## SPECIFICATIONS

LOA	115 feet (35.06 meters)
Beam	23 feet 9.5 inches (7.25 meters)
Draft	4.5 feet (1.5 meters)
Fuel Capacity	7,500 gallons (28,400 liters)
Potable Water	500 gallons (1,890 liters)
Range	1,800 nautical miles (12 knots)
Speed (Normal load)	40+ knots
Complement	Crew: 12 + S.O.F. 4 berth & 12 Recl



## MACHINERY

- Main Engines: Three (3) MTU 16V2000 M94
- Generators: Two (2) Caterpillar C4.4, 75 kW Marine Generators
- Propulsor: Three (3) Kamewa A3-63 WaterJets
- Water maker: One (1) Desalination system
- HVAC chilled water system
- Fire detection/suppression system

## ELECTRONICS

- Integrated Bridge System (IBS)
- Two (2) Navigation Radar (X and S band)
- ECDIS
- Gyrocompass
- Magnetic compass
- Speed Log
- DGNSS (GPS system)
- Echo sounder
- EOIR thermal imager
- Multifunction Displays
- (1) Autopilot
- (1) AIS
- (2) HF/SSB radios
- (1) VHF/UHF Tactical Radio
- (4) Handheld VHF units
- (1) Intercom system
- (1) Sound powered phone system
- (1) GMDSS

## MANAGEMENT SYSTEM

- SYNTACS-Synopsis Tactical Command System (Raytheon)
- Integrated Navigation System
- Integrated Tactical Command System
- Tactical Situational Awareness
- Data Link (Fleet Link)
- Integrated EOS Control
- Integrated Weapon Control
- Conning: Data for Command the Ship

## RESCUE BOAT & RAMP

- One (1) 7 meter RHIB capability with fast launching and retrieval system

## ARMAMENT

- One (1) Raytheon Griffin Missile System with two (2) quad launchers
- One (1) Aselsan 30mm Gun System SMASH (200 rds/min).
- Two (2) Mk 93 50 caliber mounts w/ MK16 tripod.