



 **SWIFTSHIPS**  
Trust, Innovation & Excellence

# OUR COMPANY | trust, innovation, excellence

Swiftships is recognized globally as a leading shipbuilder and maritime systems integrator. Our main activities encompass design, engineering, shipbuilding, co-production programs, and vessel lifecycle maintenance and support services.

Since 1942, we provide clients with integrated solutions that combine quality, the most advanced technologies, and dedicated customer services focused on excellence. Swiftships' teams of experienced engineers, program managers, and skilled craftsmen continuously improve our clients' and partners' capabilities so that they can accomplish their missions safely and efficiently.

## WHO WE ARE

A global leader in designing, constructing and maintaining advanced military and autonomous platforms.

## WHAT WE DO

Provide our clients vital advantages for their military, security or commercial operations to meet their mission objectives and to be successful.

## R&D | INNOVATION

Swiftships' R&D programs are at the core of our strategy. Learning trends, sustainability, and development of more reliable, more efficient vessels multi-mission vessels. Our recent solutions for increased fuel efficiency reduced vibration, and extended vessel's operational functions are few achievements that contribute to the client's higher return on investment and minimize environmental impact. A primary focus of our R&D activities:

- Reliable, safe and seamless autonomy integration
- Reduction of negative environmental impact by improving vessels propulsion and modernizing shipyards' operations
- Co-development of programs for advanced navigation and control systems
- Innovating trends to minimize human interaction during the aluminum welding process



## FEATURED PROJECTS

### NAVAL EXPANSION

In 2018, NAVSEA contracted Swiftships to design and build over 32 Landing Craft Utility (LCU) surface connectors for the U.S. Marines.



### AUTONOMOUS SYSTEMS

Pioneer in building Medium Unmanned Surface Vehicles (MUSV) - contracted to construct Autonomous Vessels for the United States Navy (USN).

### LIFE CYCLE SUPPORT

Global MRD - Service Life Extension of Platform (SLEP) contract across all of US (CONUS), Middle East, Asia, North Africa, and Asia (OCONUS) to support US Army's Landing Craft (LCU 2000) program.



## VESSEL CLASSES

### MILITARY

- Corvettes
- Unmanned Surface Vehicles (USV)
- Fast Patrol Vessels (FPV)
- Patrol Boats (PB)
- Landing Craft, Utility (LCU)
- Unmanned Aerial Retrievers (UAR)
- Minehunters/Minesweepers (MH/MS)
- Special Operations/Riverine (SO-R)

### COMMERCIAL

- Fast Supply Vessels (FSV)
- Multi-Purpose Vessels (MPV)
- Offshore Supply Vessels (OSV)
- Maintenance Support Vessels (MSV)
- Tug/Push Boats (TB)
- Hydrographic Vessels (HV)
- Pilot Boats (PiB)
- Route Survey Vessels (RSV)

**Length:** 10-90 meters

**Material:** Steel and Aluminum





## NEW BUILD | design to deployment

### DESIGN AND ENGINEERING

**Hundreds of proprietary designs with proven military and commercial hulls in service. Our engineering teams combine continuous product development and years of experience to produce innovative, highly efficient, and functional designs.**

Our engineers apply computer-aided design and analysis methods across all technical disciplines involved in naval vessel architecture. We use modern digital tools for configuration auditing and management, optimization of availability and modernization planning, 3D analysis. Our solutions help ship owners lower Total Ownership Cost (TOC) with the most accurate packages and reliable production implementation solutions.

### SHIPBUILDING & SHIP REPAIR

**Since 1942, we have built over 1000 hulls for our clients worldwide. Our vessels are known in the industry for their quality, habitability, and ease of management. We offer vessels of up to ninety meters, made of aluminum, steel, fiberglass, or composite.**

Our services include:

- Design & Certification
- Weapon and Systems Integration
- Autonomous Technology & Integration
- Technology & Production Transfer
- Integrated Logistics Support
- Co-production & KIT Supply
- Warranty & MRD Support

### TRAINING PROGRAM

**Swifts qualified trainers to provide comprehensive training so our clients can take full advantage of the vessel's capabilities and reduce operational costs.**

We combine theoretical learning (classroom-based) with simulations (computer-based) and hands-on practice (on-the-job training – OJT) covering different areas such as ship operation and safety, systems management, vessel maintenance, and more.

### A SOLUTION TO EVERY CHALLENGE

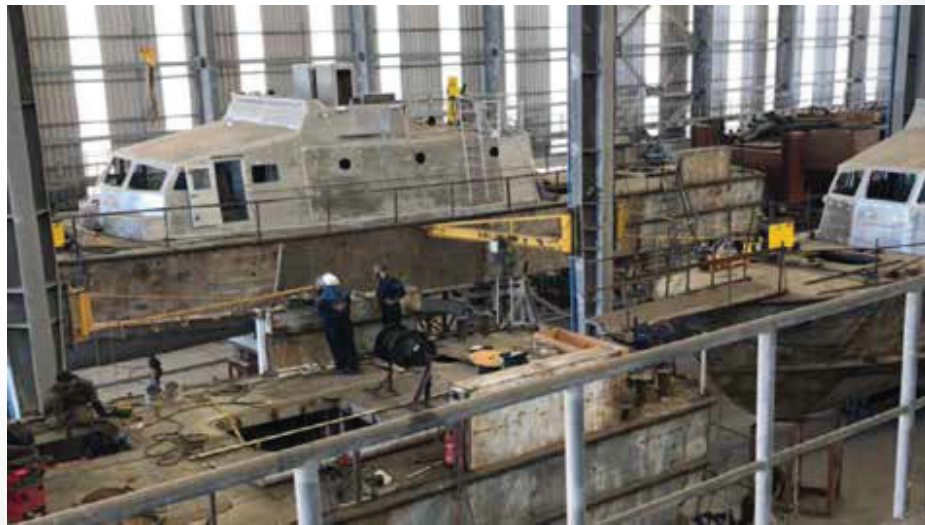
**Whichever challenge you might face, Swiftships will work with you to develop the right solution.**

Our 126 proprietary designs can be adapted, and standard technology packages are upgraded to better meet your specific environmental and Mission requirements. Our dedicated team will go above and beyond to make your missions successful.

## TECHNICAL COOPERATION

We offer highly flexible and custom-tailored cooperation models for establishing local-built capability. From design licensing to full scope assistance in developing production capability, KITs supply, and day-to-day management, Swiftships assures efficient transfer of technology, production, and knowledge.

Our years of deep Technology Transfer (ToT) experience working with international clients using our US State Department approved Build Operate Transfer (BOT) model. Our localization programs support governments' sovereignty by increasing their industrial base, creating local employment, and bringing technology and know-how to their countries for the long-term benefit.



**Coproduction activities in Egypt** | Over 15 vessels co-produced during the first 5 year

## WHY SWIFTSHIPS?

- Comprehensive program planning and management
- Maritime infrastructure planning, designing and establishment
- Over 100 designs for licensing with data packages and proven hulls
- Experience in transfer of technology and knowledge
- Turnkey production readiness solutions
- Supply chain planning, implementation and management systems
- Specialized training programs
- R&D capability development



**Service Life Extension Program** | Comprehensive SLEP to the U.S. Navy Landing Craft

## MAINTENANCE & MODERNIZE

**Swiftships has decades of experience providing all aspects of Maintenance, Repair, and Overhaul (MRO) or Refit/Ship Modernization services.**

We offer a full range of reliable, fast, and cost-effective maintenance packages. These include planned or predictive, preventative, corrective, and continuous maintenance. Our expertise encompasses all aspects from the ship's exterior upgrades to the most complex machinery and electrical (HME), electronics, communication and navigation (COM/NAV), weapons systems and other systems overhauls, servicing, upgrades and repairs.

FEATURED VESSELS | redefining new possibilities



**Littoral Mission Ship - Corvette** | A multi-mission Littoral Combat Vessel (aka Corvette) that provides an outstanding balance of oceangoing capabilities, firepower, and rotary-wing support.

LDA:	76.3M	250' 5"
BREADTH:	12.4M	40' 5"
WATERLINE LENGTH:	69.8M	229' 0"
DEPTH:	5.6M	18' 6"
DRAFT:	3.0M	9' 10"
DISPLACEMENT:	1,250 LT	
SPEED:	29 KNOTS	
	[@ 85% POWER]	
RANGE:	> 5,000 N.M.	
	[@ 15 KNOTS]	



**Fast Patrol Ship** | Built using state-of-the-art technology, high-quality components with a 25-year life cycle.

LDA:	45 M	147' 6"
BEAM:	8.23M	27'
DRAFT:	1.98M	6' 6"
RANGE (12 Knots):	2778KM	
FUEL CAPACITY:	38000L	
POTABLE WATER:	3785L	
SPEED:	40 KNOTS	
	[MAX FULL LOAD]	
CREW:	30 CREW	
	[7 OFFICERS]	



**Fast Patrol Vessel** | A primary option for navies worldwide seeking for the client, robust and, multi-capable offshore vessels.

LDA:	35.0M	115' 0"
BREADTH:	7.25M	23' 9.5"
DRAFT:	1.5M	4.5'
RANGE (12 KNOTS):	5,556 KM	
FUEL CAPACITY:	28,400 L	
POTABLE WATER:	1,890 L	
SPEED:	40+ KNOTS	
	[NORMAL LOAD]	
CREW:	12+S.O.F.	



**Patrol Boat** | An exceptionally well-proven hull (steel, aluminum, or composite) designed for multiple roles.

LDA:	28.3M	93' 0"
BREADTH:	5.7M	18' 7"
DRAFT:	2.06M	6.75'
RANGE(12KNOTS):	1667 KM	
FUEL CAPACITY:	14383 L	
POTABLE WATER:	1,892 L	
SPEED:	25 KNOTS	
	[NORMAL LOAD]	
CREW:	24	
	[INCLUDING 4 OFFICERS]	



**Landing Crafts, Utility** | Extremely efficient utility that features advanced technology and low maintenance cost.

LDA:	42.3M	139'
BEAM:	9.4M	31'
DRAFT:	1.6M	5' 3"
RANGE:	1,931.2 KM	
FUEL CAPACITY:	13,248.9 L	
POTABLE WATER:	3,785.4 LITERS	
PAYLOAD:	170 SHORT TON	
	[OF CARGO, 2 M1A1 TANKS OR 350 COMBAT TROOPS]	
SPEED:	11 KNOTS	
CREW:	2 CAPTAIN, 12 ENLISTED	



**Special Operation Craft - Riverine** | Fully customizable vessels can be configured to be unmanned, semi-manned, or remotely controlled.

LDA:	10.7M	35'
BEAM:	2.43M	8'
DRAFT:	53.3M	21'
FUEL CAPACITY:	681.3L	180 GAL
ENDURANCE(35Knots):	200+N.M.	
DISPLACEMENT (FL):	25,320LBS	
MAXIMUM SPEED (FL):	+50KNOTS	
CREW:	19[4CREW+15 TROOPS]	



**Fast Supply Vessel - Series** | A new generation solution blending high-speed performance, delivery capabilities, and unsurpassable efficiency.

LDA:	67M	220'
BEAM:	14M	46'
DRAFT:	3.9M	13'
SHIP'S FUEL:	454,249 L	
CARGO FUEL:	476,961 L	
POTABLE WATER:	105,991 L	
CARGO WATER:	105,991 L	
DRY BULK:	8,000 CF	
NET TONNAGE:	380 TONS	
CLEAR DECK:	43.8M X 11.5M	
SPEED:	14 KNOTS[N-LOAD]	
ACCOMMODATIONS:	22	



**Offshore Supply Vessel - Series** | From platform support to maintenance, custom-designed for efficient deep water, long distances, and crew comfort.

LDA:	47M	155'
BEAM:	8.5M	28'
DRAFT:	1.8M	6'
FRESH WATER:	93,688 L	
POTABLE WATER:	3,785.4 L	
SHIP'S FUEL:	29,147 L	
TRANSFERABLE FUEL:	72,869 L	
GROSS TONNAGE:	98 GROSS TONS	
CARGO DECK SPACE:	2024 SQ.FT.	
CARGO DECK CAPACITY:	150 TONS	
SPEED/MAX SPEED:	25 / 32 KNOTS	
PASSENGERS:	60	





## GLOBAL SUPPORT

With over 75 years of history serving military and commercial clients around the world, Swiftships provides technical and operational support just-in-time and in the place you need.

Our clients benefit from extensive warranty support services and personalized program management assistance.

The strategic establishment of local offices in the North and South Americas, Middle East and North Asia, and strong global partnerships, allows Swiftships to assure client's missions never stop and keep vessels operational.

### Swift Headquarters

1660 International Drive 2nd Floor, McLean, VA 22102

Phone: 985-384-1700

Fax: 703-356-1166

### Swift Military Yard

2317 Highway 662 South, Amelia, LA 70340

Phone: 985-384-1700

Fax: 985-380-2565

### Swift KSA

Prince Sultan Bin Abdulaziz Rd, Alhumdulillah Mathar As  
Shamali – Suite #23, Riyadh 11321, Saudi Arabia

Phone: +966 11 211 2344

### Swift Egyptian Co-Production Site

22 Ali Basha Zulfikar Roushdy, Alexandria, Egypt

Phone: 985-384-1700

**WWW.SWIFTSHIPS.COM**