

# 45 METER

# FAST PATROL BOAT

## MILITARY VESSEL

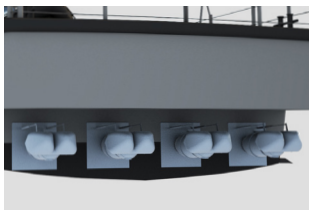


Swiftships proposed 45 Meter Fast Patrol Boat (FPB) is an all Steel Hull with Aluminum Super Structure (181.70 LT Half Load, 197.43 LT Full Load) with Top Speed of 40Knots and 1500NM @ 12 knots with a pedigree of 17 copies build in accordance with American Bureau of Shipbuilding (ABS) and High Speed Craft (HSC).

The Fast Patrol Boat is built to contain and conquer Fast Attack Craft and Fast Inshore Attack Craft threats. It is built using state-of-the-art, high quality components with a 25-year life cycle. The 45 Meter Fast Patrol Boat is a highly survivable and lethal surface vessel.

## SPECIFICATIONS

LOA	147 feet 6 inches (45 meters)
Beam	27 feet (8.23 meters)
Draft	6 feet 6 inches (1.98 meters)
Fuel Capacity	9,000 gallons (32,800 liters)
Potable Water	1000 gallons (3,785 liters)
Range	1,500 nautical miles
Speed (Maximum, full load)	40 knots
Crew/Officers	30/7



## MACHINERY

- Main Engines: Four marine diesel engines
- Propulsors: Four (4) Water Jets
- Generators: Two (2)

## ELECTRONICS

- (1) Radar, X band
- (1) Radar, S band
- (1) Gyrocompass
- (1) Bridge compass
- (1) Ring Laser Gyrocompass
- (1) Autopilot
- (1) Depth sounder
- (1) Speed Log
- (1) DGPS
- (1) ECDIS
- (1) AIS
- (1) General Intercom System
- (1) Mobile (Manpack) HF unit
- (1) HF Transceiver
- (1) HF Receiver
- (2) Data encryptors
- (2) VHF/UHF Radio transceivers
- (2) VHF/UHF tactical radio
- (1) VHF
- (8) VHF handheld – Standard Horizon HX400
- (1) Weather Fax
- (1) Wind speed direction indicator - Young
- (1) Loud Hailer system
- (1) Under Water Telephone
- (1) Sound Powered Phone system
- (1) Gunner SPP system
- (1) Satellite Communication System
- (1) GMDSS
- (1) EO

## COMBAT SYSTEM

- C2 system
- ISS/EWMS
- Chaff Launcher
- Integrated Data Link

## WEAPONS

- One (1) Aselsan 25mm Gun System (bow)
- One (1) Semi-Auto gun aft of bridge
- Four (4) 12.7mm guns w/ mounts
- Two (2) MG-1A3