

# The Future in Shipbuilding



NAVIGATING THE SEAS OF SUCCESS

# The Swiftships Story

Swiftships is recognized internationally as a leading shipbuilder and maritime systems integrator. Our main activities include design, engineering, shipbuilding, co-production programs, repair, maintenance and refit services. Our strength lies in our capability to provide clients with integrated solutions that combine quality, the most advanced technologies, and dedicated customer services focused on excellence. Driven by a mission to deliver solutions for every challenge our clients face, the Swiftships team constantly pushes to improve the capabilities of our clients and partners so they can, in turn, accomplish their missions more efficiently and safely.



# A Journey Through 80 Years of Shipbuilding Excellence



Established in  
**1942**



Vessels built  
**>1000**



Designs/IP Owned  
**>120**



Nations served  
**53**



Shipyards  
**4**



**We are committed to pioneering the future of autonomous maritime development, integrating advanced technology with decades of expertise. Our focus remains on delivering innovative, mission-ready vessels that enhance operational capabilities and adaptability for modern naval and defense forces.**

DR. TIMOTHY CARTER, PRESIDENT/CEO



## Why Swiftships?

We are driven to deliver solutions for every challenge our customers face. With experience in all aspects of engineering, shipbuilding and with the ability to provide maintenance, repair and overhaul (MRO) services for different vessel types, Swiftships stands as a complete solution provider to the client.

- Comprehensive program planning and management
- Maritime infrastructure planning, designing and establishment
- Over 100 designs for licensing with data packages and proven hulls
- Experience in transfer of technology and knowledge
- Specialized training programs
- R&D capability development





EARNING YOUR TRUST WITH EXCELLENCE

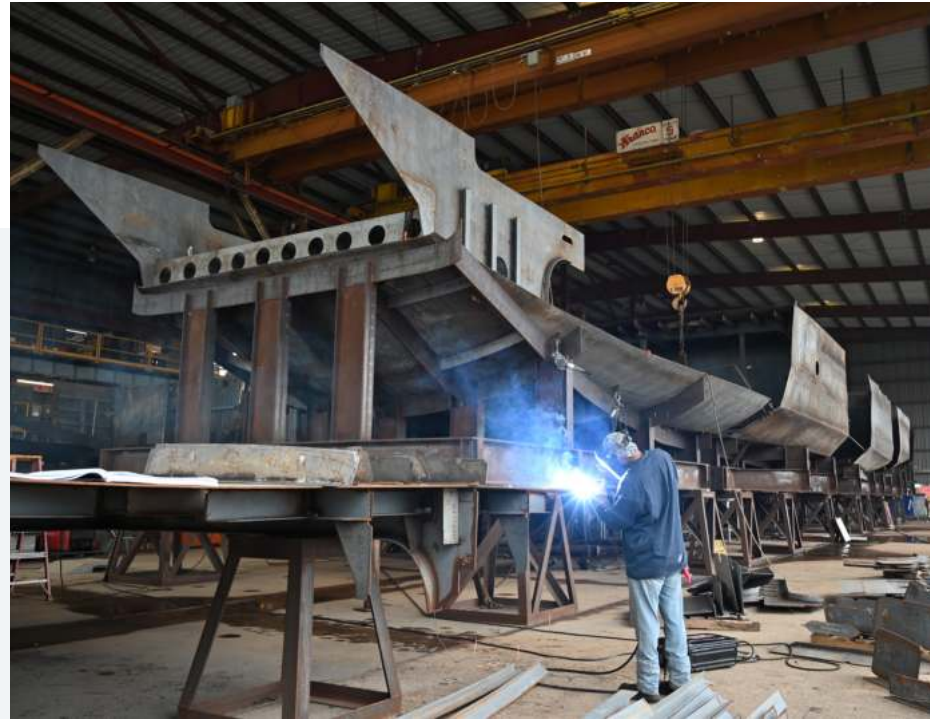
# Swiftships Services

Our growth is driven by the capability to innovate, engineer and build quality, multi-mission vessels. The key to our success, however, lies in Swiftships customer-centric services and our team dedication to deliver excellent results within the most demanding time & budget frames.

## Engineering, Build and System Integration



Shipbuilding has been Swiftships core business since our establishment in 1942. Since then, we have built over 1000 vessels, and developed over 100 proprietary military and commercial vessels' designs. We offer highly flexible options, from design licensing rights to full shipbuilding support, with over hundred hull designs to choose from. Our designs are certified by US Coast Guard and ABS to support our clients globally in achieving their sovereign capabilities.



## Vessel's Life Cycle Sustainment

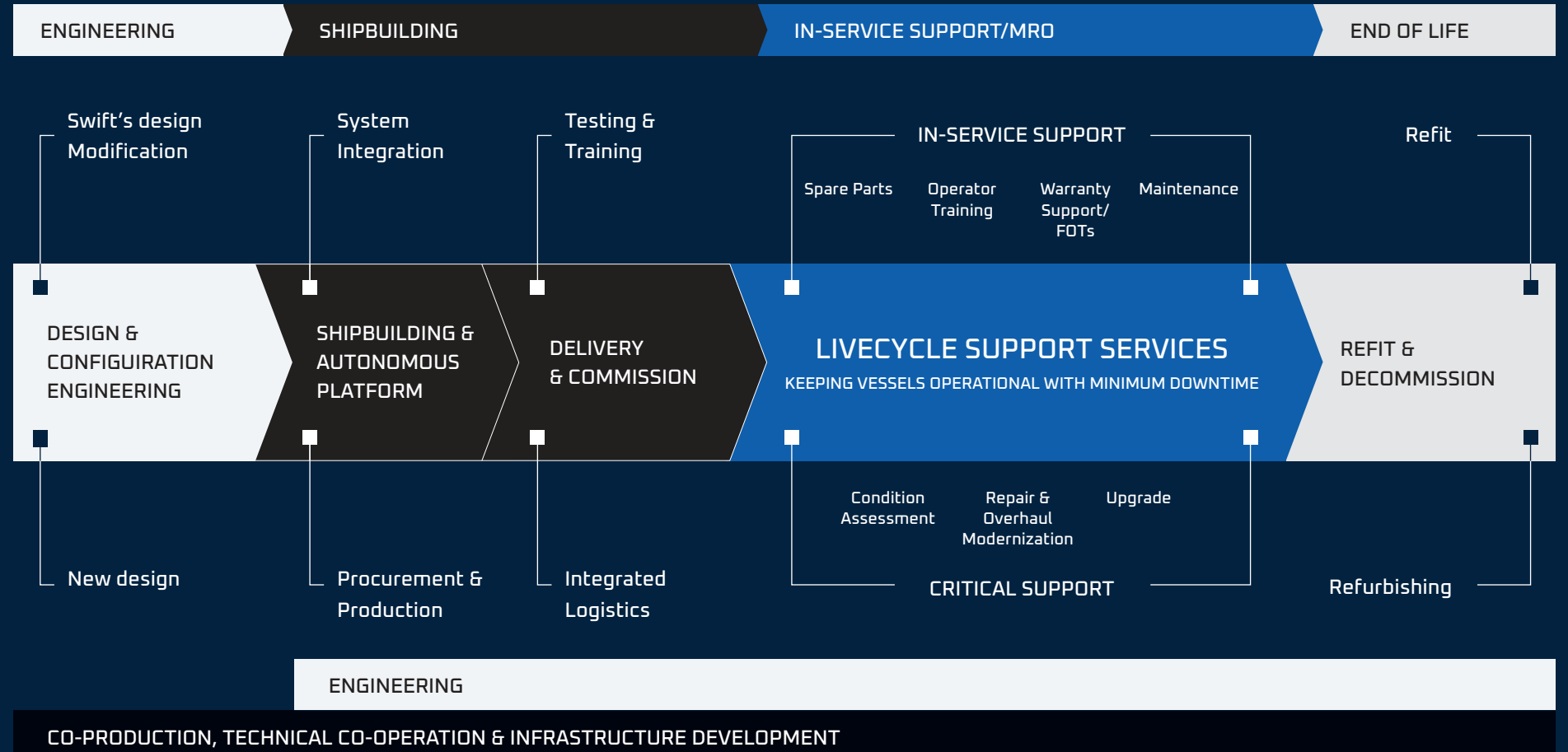


Swiftships mission is to keep our clients' vessels operational at all time at the minimum cost. We have decades of experience providing all aspects of Maintenance, Repair and Overhaul (MRO) and Refit/Ship Modernization services for various types and sizes of ships for the US Navy, NAVSEA and foreign navies. We are one of a few shipyards worldwide that have experience in managing an entire fleet for a foreign government.

## Specialized Professional Services



At SwiftShips, our specialized professional services are meticulously tailored to meet the unique demands of each client. With a keen understanding of individual requirements, we craft solutions that go beyond expectations.



**With a legacy of 120+ vessel designs and over 45 years of service, Swiftships excels in customizing our proven hulls to precisely meet client needs, whether it's adapting commercial platforms for military purposes or innovating unmanned, semi-manned, or remote-controlled vessels.**

# Global Presence

Swiftships vessels have been tested in every ocean, across all weather conditions, even during missions with low to high threat levels. We have a presence in 52 countries worldwide, with strategic establishments in North America, Middle East, North Africa, and Asia.

Swiftships is headquartered in the United States and operates five shipyards and several dry docks (up to 45,000 tons). We support NAVSEA extensively by designing, building and testing hundred of their vessels, maintaining and repairing vessels for the U.S. Navy and U.S. Army, and building ships for our international clients.

## CO-PRODUCTION YARDS

We've partnered with local shipyards, like our 40-year collaboration with Egypt in Alexandria, using U.S. materials and local labor to build over 50 CPC28 vessels by 2027. We're also launching co-marketing initiatives in Africa and the Middle East.



## MAINTENANCE AND REPAIR YARDS

Swiftships has 50+ years of experience in maintaining, repairing, and upgrading naval and commercial vessels.

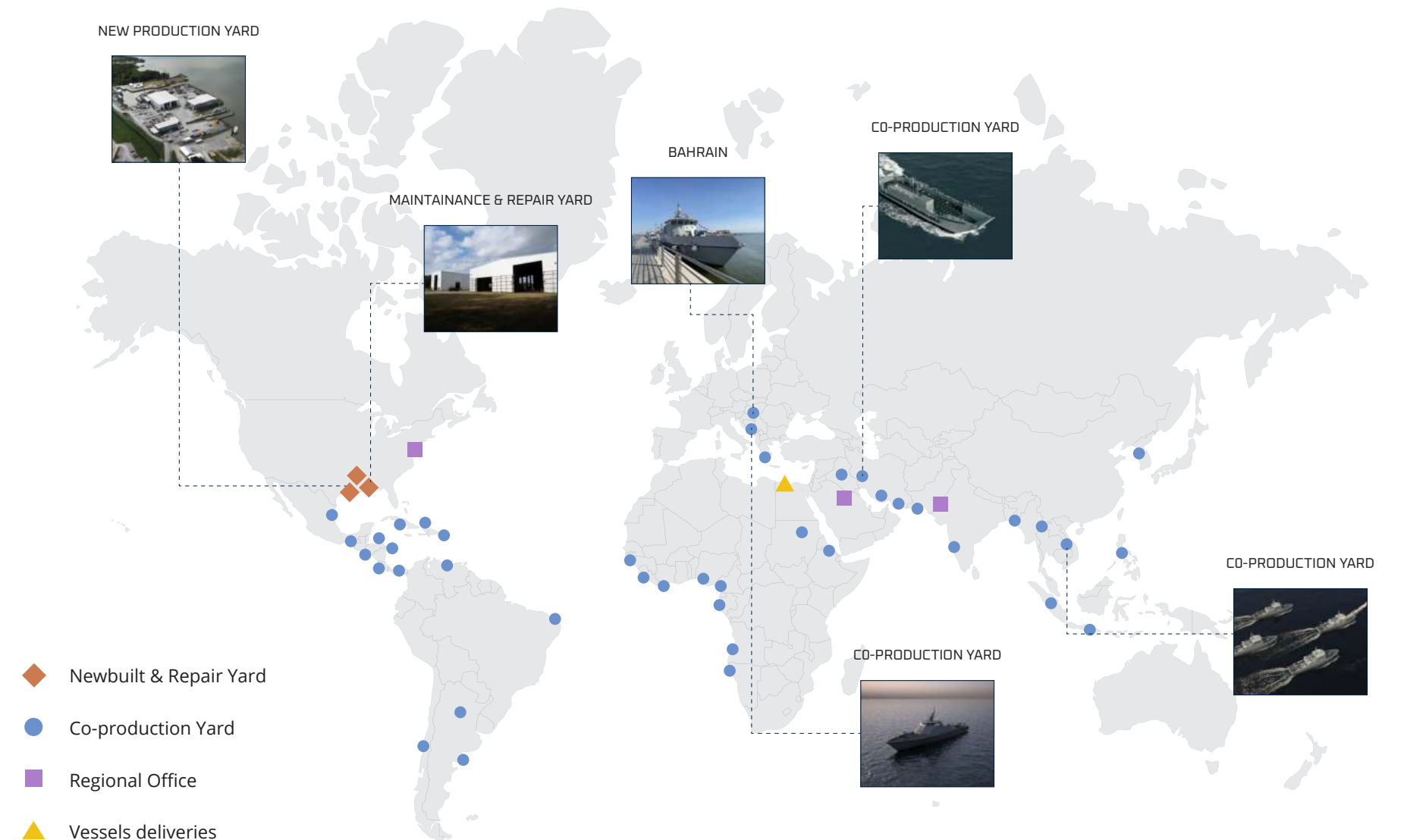


## GLOBAL STRATEGY SUCCESS

Swiftships, based in the US, expands globally through partnerships, joint ventures, and subsidiaries, supporting client operations, local industries, and job creation in over 50 countries, with 4 shipyards, dry docks, and joint ventures in Saudi Arabia (KSA).



# Operations & Expertise





# Swiftships Military Vessels

Swiftships lead in diverse military vessel construction, from border security to high-threat law enforcement and defense scenarios. We are a market leader in the construction of cost-effective, high-performance patrol vessels.

We also take pride in our modern amphibious series and small warships, that combined with autonomous technology give advanced capabilities for navies and are aligned with modern warfare such as distributed fleet strategy.



**We are a market leader in the construction of cost-effective, high-performance patrol vessels**



# Military Vessels

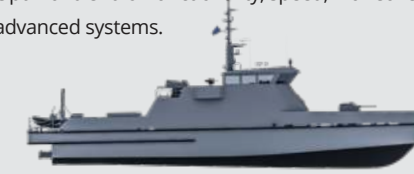
## SWIFT CORVETTE SERIES

- Innovative and versatile combat vessels
- Proprietary Corvettes meeting modern naval standards
- Customizable with intelligent weapon systems for cost-effective missions.



## FAST PATROL VESSELS

- Multipurpose, high-speed surface vessels (45+ knots).
- Preferred choice for global navies and agencies due to functionality and performance.
- Optimal blend of functionality, speed, maneuverability, advanced systems.



## LANDING CRAFT

- Trusted by U.S. Navy and global governments.
- LCUs feature advanced technologies for shallow landings, high survivability, and cost-efficient operations.
- Pioneering autonomous LCUs for unmanned operations.



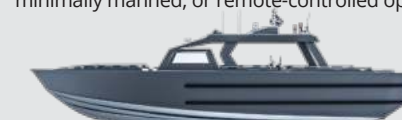
## PATROL BOATS

- Swiftships Patrol Boats ensure sovereignty in waters.
- Highly adaptable to diverse missions and needs.
- Functions include coastal defense, force protection, surveillance, and more.



## SPECIAL OPERATIONS RIVERINE

- High-speed vessels capable of reaching speeds exceeding 50 knots.
- Modern Swiftships platforms: high maneuverability, unmanned capability.
- Equipped with autonomy systems for unmanned, minimally manned, or remote-controlled operations.



## SUVS - CHALLENGER

- Challenger enables mariners to delegate routing to self-piloting tech.
- Multi-modal awareness, threat recognition, anti-collision in standard package.
- Manned/Unmanned options, NATO STANAG 4586 & JAUS compliant.



## SWIFT SEA-STALKER (S3)



- The Swift Sea-Stalker S3 is designed for both remote and autonomous missions, offering high endurance with a durable aluminum hull and a heavy-duty no. 2 diesel engine.
- Equipped with two propulsion systems, propeller and water-jet, the S3 provides versatile performance to meet various maritime needs.
- Featuring four AGM-179 Joint Air-to-Ground Missiles (JAGM), the S3 enhances the U.S. Navy's unmanned maritime capabilities, fully compliant with NATO STANAG 4586 and JAUS protocols.



# Swift Corvette



Swiftships' combat vessels are incredibly effective in a wide range of missions due to their innovative designs, powerful features, and advanced system integration. Our proprietary Corvettes are built to adhere to the most modern naval standards, emphasizing robustness, speed, and survivability. These Swift Corvettes have been proven and are fully customizable, allowing them to be equipped with an extensive array of intelligent weapon systems and/or integrated autonomous control functions. Our solutions prioritize cost-effectiveness and the vessel's longevity.

**The Swiftships' 75M Corvette** offers an exceptional blend of oceanic capabilities and firepower. The 75M Corvette can be primarily used in coastal defense, surveillance missions and maritime patrolling, as well as secondary roles including humanitarian and disaster relief. Its innovative design enables the best performance in terms of speed, fuel consumption and endurance, while maintaining higher degrees of stability and sea keeping. Swiftships has armed The 75M Corvette with the latest surface weaponry and electronic warfare, while preserving the capability for future growth with antisubmarine weapons.

# Swift Corvette

Maneuverable and stable design paired with advanced weapon system. It seamlessly integrates autonomy systems for both unmanned and minimally manned operations, setting a new standard in modern warfare.

- **LOA**  
250' 5" (76.3m)
- **SPEED**  
29 knots
- **RANGE**  
>5,000 n.m. (@ 15 knots)
- **BREADTH**  
40' 9" (12.4m)
- **DRAFT**  
9' 10" (3.0m)



## WHAT MAKES US STAND OUT

- Maneuverable and stable design paired with advanced weapon system
- State-of-art electronics and navigation.
- Autonomy systems can be integrated for unmanned and minimally manned operations
- They are built accordingly to the most modern naval standards and are optimized for robustness, speed and survivability.



# Fast Patrol Vessels



Swiftships Fast Patrol boats are multipurpose, functional, and quick response surface vessels, with speed over 45 knots. These platforms have been the primary option for a number of navies and government agencies around the world. The combination of capabilities, such as high level of functionality, optimal speed, proven hulls and a sophisticated command and weapon systems, make this vessel an optimal platform for value and performance.

They can be built to meet the most demanding requirements of your fleet. Our engineers utilize proven methods to identify cutting-edge technologies that best suit your operational mission needs and extend the capabilities of any given vessel. Through our evaluation and selection processes, we ensure both low-risk and low-cost integration of all equipment and systems.



## 45 METER FAST PATROL BOAT – FPB45

Built using state-of-the-art, high quality components with a 25-year life cycle

– <b>LOA</b> 147' 6" (45m)	– <b>SPEED</b> 40 knots (max, full load)	– <b>RANGE</b> 1,500 n.m. (2,778 km)
– <b>BEAM</b> 27' (8.23m)	– <b>DRAFT</b> 6.6 Feet (1.98 Meter)	



## 35 METER FAST PATROL VESSEL – FPV35

Modern, robust and efficient FPV with the best operational capability in any sea conditions

– <b>LOA</b> 115' (35.06m)	– <b>SPEED</b> Top Speed Options from 30 to 45+ Knots	
– <b>RANGE</b> 3,000 n.m. (5,556 km)	– <b>BEAM</b> 23.9 Feet (7.25m)	– <b>DRAFT</b> 4.5' (1.5m)



## 26 METER FAST PATROL CRAFT – FPC26

Perfectly designed to contain and conquer almost any aerial and underwater threats

– <b>LOA</b> 85 Feet (26m)	– <b>SPEED</b> 35+ knots (full load, full power)	
– <b>RANGE</b> 1,000 n.m. (1,852 km)	– <b>BEAM</b> 20' (6m)	– <b>DRAFT</b> 5 Feet (1.5 Meter)



### WHAT MAKES US STAND OUT

- Aerodynamic design, lightweight aluminum construction, and advanced propulsion for maximum speed.
- Feature extreme maneuverability and stability in fast-attack operations.
- Customized vessel design and systems modifications to meet specific client requirements.



# Landing Craft Utility



Swiftships applies the world's latest technologies in the construction of our Landing Craft Utility (LCU). Our LCU platforms are trusted by the U.S. Navy and many foreign governments for their efficiency, quality and extensive capabilities. Along with its industry leading technology partners, Swiftships is developing reliable solutions to increase its LCU functions and capabilities by the integration

of autonomous command and control. This groundbreaking technology, which includes an automated bridge, unmanned loading and unloading capabilities, and connectivity to autonomous land vehicles, makes these military vessels capable of full autonomous cargo delivery. Such advancements significantly increase any government's or military's savings and operational safety.



## 45 METER LANDING CRAFT UTILITY- LCU Class 1700

The LCU 1700 class upgrades the USN LCU 1650 with improved propulsion, increased cargo capacity, and cost-efficient operation through smaller, powerful engines.

— <b>LOA</b> 139 Feet (42.3m)	— <b>SPEED</b> 11 knots	— <b>RANGE</b> 1,200 miles (1931.2km)
— <b>BEAM</b> 31 Feet (9.4m)	— <b>DRAFT</b> 5.3 Feet (1.6m)	



## 40-60 METER LANDING CRAFT UTILITY-LCU40

The LCU 40 Landing Craft is a versatile, twin-screw, all-welded steel vessel powered by diesel. Its specifications are adaptable, with the option to extend the length to 60 meters to suit operator requirements.

— <b>LOA</b> 130 Feet (40m)	— <b>SPEED</b> 10 knots	— <b>RANGE</b> 3,000 n.m. (5,556 km)
— <b>BEAM</b> 36 Feet (11m)	— <b>DRAFT</b> 4.3 Feet (1.3m)	



## WHAT MAKES US STAND OUT

- State-of-the-art and innovative hydromechanics propulsion system that enhances performance
- Optimized design for increased cargo capacity, endurance and operational flexibility
- Safe and effective payload transfer capability (ship-to- shore and ship-to-ship)
- Advanced system integration, including command and navigation system.



# Patrol Boats



Swiftships is a leading provider of Patrol Boats dedicated to ensuring the security and integrity of sovereign waters. Our approach involves the utilization of high-performance solutions and the incorporation of materials that offer exceptional value. These patrol boats are accurately tailored to suit the specific preferences

and mission criteria of our clients. They find utility across a spectrum of roles including coastal defense, anti-surface offensives, maritime security, as well as surveillance and intelligence gathering. Swiftships' patrol boats are designed to excel in diverse maritime scenarios.



## 35 METER PATROL BOAT – PB35

Steel hull and aluminum superstructure with weather survivability at sea state 6 and optimum sea keeping

- **LOA** 115 Feet (35.06m)
- **SPEED** 25 knots (normal load)
- **RANGE** 2,778 Kilometer (1,500 Nautical Mile)
- **BEAM** 23.78 Feet (7.2m)
- **DRAFT** 8.1 Feet (2.47m)



## 14 METER HIGH SPEED SECURITY BOAT

Aluminum welded patrol boat designed to the best performance in shallow and high seas

- **LOA** 46 Feet (14m)
- **SPEED** 40 knots (normal load)
- **RANGE** 200 n.m. (370 km)
- **BEAM** 14.5 Feet (4.4m)
- **DRAFT** 2 Feet (0.6m)



## 28 METER COASTAL PATROL BOAT – CPC28

Exceptionally well-proven hull, compact design with high performance, multi-mission capabilities

- **LOA** 93 Feet (28.3m)
- **SPEED** 25 knots (normal load)
- **RANGE** 1,667 Kilometer (900 Nautical Miles)
- **BEAM** 18.7 Feet (5.7m)
- **DRAFT** 6.75' (2.06m)



## 12 METER PATROL BOAT

Diesel powered water jet patrol craft constructed of aluminum

- **LOA** 39.4 Feet (12m)
- **SPEED** 45 knots (normal load)
- **RANGE** 370.4 Kilometer (200 Nautical Miles)
- **BEAM** 12' 6 Feet (3.8m)
- **DRAFT** 2.6 Feet (0.7m)



## 23 METER PATROL BOAT – PB23

Twin propeller diesel powered patrol craft constructed with aluminum alloy

- **LOA** 77 Feet (23.5m)
- **SPEED** 27 knots (normal load)
- **RANGE** 926 Kilometers (500 Nautical Miles)
- **BEAM** 20 Feet (6m)
- **DRAFT** 9 Feet (2.7m)



## WHAT MAKES US STAND OUT

- High performance in compact design and multi mission capable
- Modifications as per operator's mission requirements
- Designed to operate in shallow waters, rivers, bays, harbors and along the coast



# Special Operations Riverine Craft



Our riverine platforms feature superior capabilities and top performance in extreme conditions. Our vessels are easily customized based on the client's preferences. They can be configured to unmanned, semi-manned or remotely controlled craft. Integrate advanced technologies and systems, such as lasers, cameras, ultrasound and other sensors, gauge currents and waves, and allow

to detect obstacles in the water, such as logs or oncoming boats. The collected information is assessed by a system that makes real time decisions, and reacts quickly, steering and accelerating the boat as if an experienced human pilot was navigating it.



## 11 METER RIVERINE ASSAULT CRAFT - RAC11

Modified V hull form aluminum craft designed to operate in both salt and fresh water and survive in Sea State 4

— <b>LOA</b>	— <b>SPEED</b>	
36 Feet (11m)	50+ knots (max, full load)	
— <b>RANGE</b>	— <b>BEAM</b>	— <b>DRAFT</b>
1,200 miles (1931.2km)	8.11 Feet (2.7m)	22 Feet (0.55m)



## 11 METER SPECIAL OPERATIONS RIVERINE CRAFT - SOCR11

Anaconda class craft that features extreme maneuverability and survivability with top performance up to 125° F

— <b>LOA</b>	— <b>SPEED</b>	— <b>BEAM</b>
35 Feet (11m)	50 knots (maximum)	8 Feet (2.43m)
— <b>DRAFT</b>	— <b>CREW</b>	
21' (53.34m)	19 (4 crew & 15 troops)	



### WHAT MAKES US STAND OUT

- Exceptional maneuverability, survivability, and peak performance under extreme conditions.
- They combine to gauge currents and waves to detect obstacles in the water such as logs or oncoming boats.
- These vessels can be remotely controlled, partially manned, or fully unmanned, thereby becoming SUVs (Semi-Unmanned Vessels).



# SUVS - Challenger



In February 2022, Swiftships unveiled its 46 Feet Challenger, a surface vessel designed for unmanned missions that combine total situational awareness with functional design and performance using an autonomous systems of clients'

choices. Reaching a top speed of 45+ knots and an endurance of over 40 hours, the Challenger will greatly enhance maritime fleet force protection by identifying and engaging remote targets before they become imminent threats.

46 FEET

# Challenger



Challenger's Intelligence Systems offer advanced self-piloting technology for mariners, with threat-based object recognition, tracking, anti-collision features, and data connectivity. It comes in both Manned and Unmanned configurations, boasting high endurance and NATO STANAG 4586 and JAUS protocol compliance.

- |                                   |  |                                 |
|-----------------------------------|--|---------------------------------|
| — <b>LOA</b><br>46 Feet (14m)     | — <b>SPEED</b><br>45+ Knots with Range of 400 NM       | — <b>DRAFT</b><br>2 Feet (0.6m) |
| — <b>BEAM</b><br>14.5 Feet (4.4m) | — <b>FUEL CAPACITY</b><br>800 Gallons (3,028.3 Liters) |                                 |



## WHAT MAKES US STAND OUT

- Adaptive hull design allowing for operations in multiple environments
- Improved Propulsion for enhanced speed, range, stability and endurance
- Integrated advanced ISR package, built-in diagnostic and weapon systems
- Proven hull, reduced drag and improved stability



# SWIFT SEA-STALKER (S3) »»



Introducing the Swift Sea-Stalker S3, an Unmanned Surface Vehicle (sUSV) designed for both remote and autonomous operations. Built with a durable aluminum hull and powered by a heavy-duty no. 2 diesel engine, the S3 offers high endurance and flexibility with two propulsion options: propeller and water-jet systems. Compliant with NATO STANAG 4586 and JAUS protocols, the S3 ensures seamless integration with joint operations.

Unveiled by Swiftships, this maritime innovation is equipped with four AGM-179 Joint Air-to-Ground Missiles (JAGM), enhancing the U.S. Navy's unmanned maritime capabilities. Recently showcased at the Technology Readiness Experimentation (T-REX) 24-2, the S3 exemplifies the U.S. Department of Defense's drive for rapid technological advancement in joint capabilities.

# SWIFT SEA-STALKER (S3) »»

The S3 features a rugged aluminum hull, Yanmar 230 HP engine, and Hamilton Water Jet propulsion, ensuring high endurance and stability. Its advanced radar, sonar, and night-vision systems provide superior situational awareness, while its self-scuttling capability enhances security. Designed for rapid deployment and low maintenance, the S3 is transportable by air, sea, or land and excels in demanding sea states.

- **LOA**  
46' (14m)
- **SPEED**  
30 knots with Range of 1,000 n.m.
- **FUEL CAPACITY:**  
400 Gallons (1514.16 Liters)
- **BEAM**  
6' (1.82m)
- **DRAFT**  
6.6' (1.98m)



## WHAT MAKES US STAND OUT

- Advanced Unmanned Capabilities with Fully remote and autonomous operation, compliant to NATO and JAUS standards.
- High-Endurance Design, equipped with a robust aluminum hull, high-capacity fuel storage, and powerful propulsion systems.
- Comprehensive Multi-Mission Systems, featuring cutting-edge ISR technology, integrated electronics for superior situational awareness, and a rapid production capabilities.



# Swiftships Commercial Vessels



With over 50 hull designs ranging from 9 to 90 meters in length, Swiftships' commercial vessels have become the platform of choice for many companies and governments throughout the world. Hallmarks include proven hulls with excellent seakeeping and maneuverability, efficient and economic operability, ease of maintenance, upgrades and assured follow on technical support, amenities providing for maximum crew comfort, and an emphasis on safety and environmental protection in accordance with government and IMO regulations, often exceeding industry standards. All these combine to make our vessels top performers in the commercial maritime market



**Swiftships' commercial vessels excel with proven hulls, economic efficiency, and a strong commitment to safety and environmental standards.**



## OFFSHORE SUPPLY VESSEL

- Swiftships offers a diverse range of Platform Supply Vessels and Offshore Support Vessels, each exceeding 85 meters in length.
- These vessels are specifically designed for efficient operations in deep waters and long-distance supply missions.



## FAST SUPPLY VESSELS

- Fast Supply Vessels (FSVs) offer high-speed performance and efficient delivery capabilities.
- They can be adapted for a variety of multi-purpose missions.
- These vessels can be upgraded with the latest technology and systems.



## CREW BOATS

- Swiftships' crew boats feature a modern, fuel-efficient design.
- They offer unsurpassed sea-keeping capabilities and are equipped with advanced electronics and control systems.



## MAINTENANCE VESSELS

- Maintenance vessel for Single Point Mooring (SPM) with the capability to perform routine maintenance and provide modified supply services.





PROVEN PLATFORMS AND SYSTEM INTEGRATION EXPERTISE

# Autonomous Solutions



Swiftships is the industry's leader in innovation and manufacturing of highly specialized unmanned, minimally manned and remotely controlled surface vessels. We believe that autonomous vessels are the future of modern naval warfare, offering critical defense capabilities, increasing the level of security in maritime infrastructures across the globe and reducing risking human risk. In collaboration with the industry's technology leaders, we continuously develop new solutions for autonomy integration, unmanned surface vessels design, and we constantly improve our construction and conversion methods.

Swiftships name became central to conversations around Unmanned Autonomous Vessels (UAV) since the US Navy's 2018 selection of the Swiftships' Riley Claire – a 175 Foot Fast Supply Vessel (FSV) – for transformation into a Large Unmanned Surface Vessel (LUSV), named "Nomad". Nomad became the first unmanned vessel of its kind added to Unmanned Surface Vessel Division One (USVDIV-1) and it has been thoroughly tested during autonomous missions.





# Autonomous Solutions »

## DESIGN AND BUILD

Swiftships has been designing and manufacturing highly specialized military surface vessels for over 80 years. We have outpaced our competition by developing solutions for small, medium, and large Unmanned Surface Vessels (USVs) that combine power, speed, stealth, mobility, ease of deployment, and mission readiness.

We design and build vessels meeting customer requirements for different autonomy levels. We can also retrofit current ship designs with advanced autonomous capabilities, and we offer our clients a turnkey operating capability, including developing tailored conventional or autonomous platforms, with MRO and sustainment programs that will help navies modernize their ships while slashing costs



## PLATFORM CONVERSION

We offer platform conversion and system integration services for our clients who seek to acquire reliable and proven militarized unmanned or minimally manned vessels. Some of our platforms are already tested for autonomous missions, including formerly a fast supply vessel called Riley Claire (aka Nomad). We provide our clients multiple configuration options, and our engineering teams work in providing the most suitable solution based on the individual missions.

### Conversion Methodology

- Phase I: Enhance hull, mechanical, navigation, and electrical systems for reliability.
- Phase II: Integrate autonomy systems, including radar, IR/EO cameras, and mission-specific sensors.
- Phase III: Test system reliability with required autonomy hours and long-range autonomous transits in challenging environments.

# System Integration And Technology »

Swiftships have outpaced their competition by developing a fleet of small, medium, and large Unmanned Surface Vessels (USVs) that combine power, speed, stealth, mobility, ease of deployment, and mission readiness.

Swiftships collaborates with industry leading technological developers and original equipment manufacturers, and has the required expertise and experience in integration of mission critical systems based on clients configuration requirements – from ship exterior modifications to the most complicated machinery and electrical (HME) components, electronics, communication and navigation (COM/NAV), weapons systems, and numerous system overhauls, servicing, and upgrades.



## AUTONOMY INTEGRATION TO NAVAL PLATFORMS

Advanced technologies enable seamless integration of custom autonomous systems into naval platforms.



## MISSILE, WEAPON AND COMBAT MANAGEMENT SYSTEMS

Limited full autonomy for self-defense scenarios can be achieved through decoys, CIWS, PDMS, automated guns, and SSM/SAM systems.



## UNMANNED AERIAL PLATFORMS

Integrated launch and recovery platforms for UAVs from Sea-State 3-4 with high pitch and roll stability solutions.



## UAVS HOMING SOLUTIONS

Development of integrated homing solutions to control UAVs from base to sea.



# Featured Projects

## IRAQ NAVY

Swiftships has significantly contributed to the modernization of the Iraq Navy through key initiatives. These include the construction of 35M Coastal Patrol Boats and 35M Fast Patrol Vessels (FPVs), as well as the implementation of a Continuous Lifecycle Support (CLS) program at the Umm Qasr Naval Base.

The CLS program provides comprehensive maintenance and operational support for 62M Offshore Support Vessels (OSVs), 35M Patrol Boats, and 26ft Defender Class Boats, while also managing drydock/syncrolift facilities, dyno operations, port-side support, ship repairs, and warehouse management. This program was executed by Swiftships' dedicated in-country team, stationed at Camp Swift, ensuring the longevity and readiness of the Iraq Navy's fleet.



## THE U.S. AND ALLIES NAVIES

Swiftships' 35M Fast Patrol Vessel (FPV35) stands as one of the most widely utilized vessels globally, with over 33 hulls produced. Renowned for its efficiency, speed, and maneuverability, the FPV35 has been delivered to the U.S. Navy and allied nations including Iraq, Bahrain, and the Dominican Republic.

Recent upgrades to the FPV35 include the integration of advanced missile systems, significantly enhancing the vessel's threat-response capabilities and expanding its multi-mission functionality.

# Featured Projects

## EGYPTIAN NAVY CO-PRODUCTION PROGRAM

Swiftships' expertise in local production assistance is showcased in the Egyptian Navy's Coast Patrol Craft (CPC) program. Following a Build, Operate & Transfer (BOT) model, the program included Transfer of Technology (ToT) and Transfer of Production (ToP) to Egypt.

Swiftships also implemented a robust training program, educating over 500 Egyptian personnel in the manufacturing and maintenance of naval crafts. This initiative successfully established an industrial base in Egypt, increasing local production capabilities fivefold.



## US NAVY CONTRACT

The U.S. Navy's LCU 2000 Service Life Extension Program (SLEP) focuses on On-Condition Cyclical Maintenance (OCCM), including the replacement of critical systems such as propulsion engines, generators, bow thruster engines, and emergency power units. Additional upgrades include the installation of grid coolers and switchboards.

These vessels, equipped with an aft anchor for beach retraction, are designed to transport a range of cargo, including rolling and tracked vehicles, containers, and oversized goods from offshore ships to areas inaccessible by larger vessels.





---

## Swift Headquarters (HQ)

- 📍 8001A Highway 182 East, Morgan City, LA 70380 [Suite A]
- ☎ 985-384-1700
- 📠 703-356-1166

## Swift Program

- 📍 1105 Levee Road, Morgan City LA 70380
- ☎ 985-384-1700
- 📠 985-380-2565

## Swift Military & KIT Program

- 📍 2397 Highway 662, Amelia, LA 70340
- ☎ 985-384-1700
- 📠 703-356-1166

